

SIFONE

HL®

ABLÄUFE

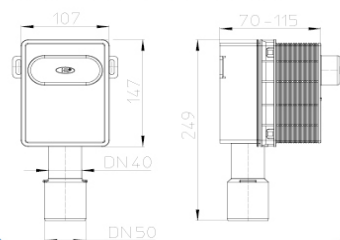
INFO
06/2015

Recessed washing device siphon HL4000

For washing machine, dryer or wash basin

HL4000.0

0,5 l/s
DN 40/50



HL4000.1

0,5 l/s
DN 40/50



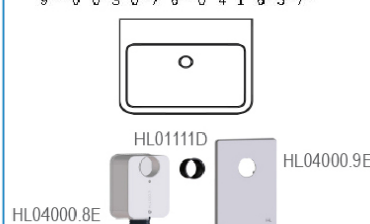
HL4000.2

2 x 0,5 l/s
DN 40/50



HL4000.3

0,6 l/s
DN 40/50



Product description

The products, mentioned above, are recessed siphons, which may be used for different purposes:
ONE corpus (HL4000.0) may be upgraded later on for different applications.

For ONE washing machine: HL4000.0 corpus + HL 4000.1 **Single-**Upgrade-kit

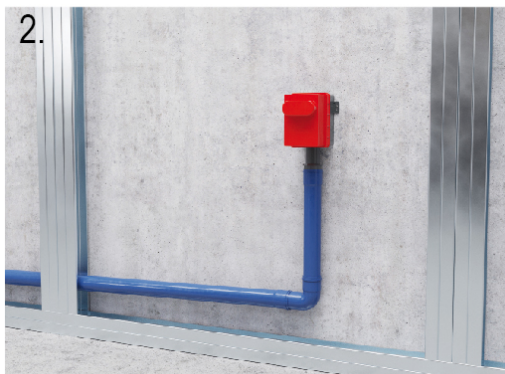
For washing machine and clothes dryer: HL4000.0 corpus + HL4000.2 **Double-** Upgrade-kit

Or as recessed wash basin siphon: HL4000.0 corpus + HL4000.3 **Wash basin-** Upgrade-kit

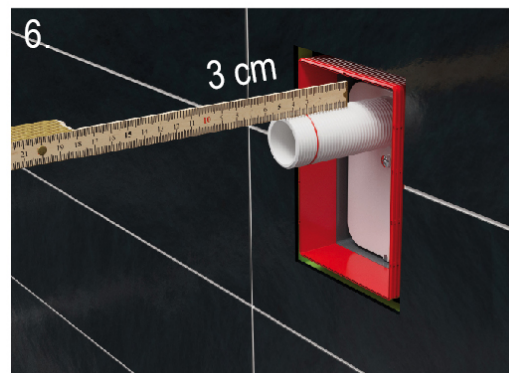
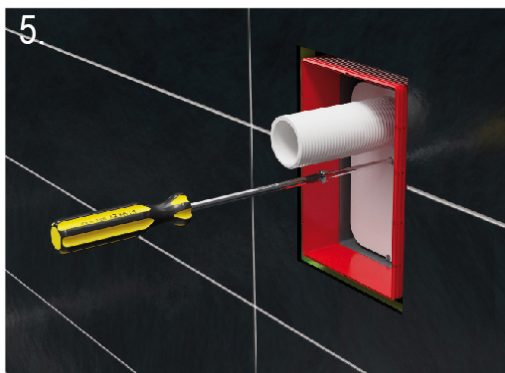
Advantages

- ONE corpus may be completed later on, according to the needs of the end-user
- High availability of the (at the first) needed corpus at the wholesaler or installer
- All visible parts are delivered, when finishing the room and may therefore not get dirty, destroyed or lost
- Perfect cleaning of the removable siphon cartridge
- Transparent backside of the cartridge makes it easy to detect possible contaminations
- Plugging: Wide access to the waste pipe (e.g. with a cleaning eye)

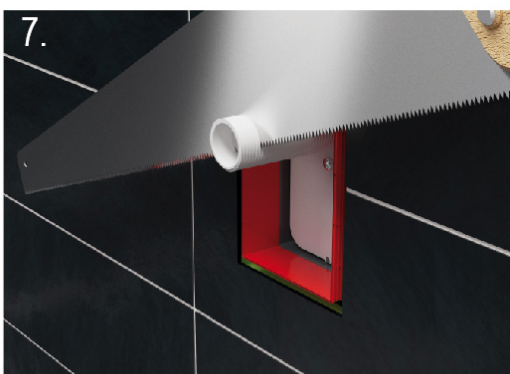
HL4000.0 (Pic. 1 - 3)



HL4000.1 (Pic. 4 - 9)

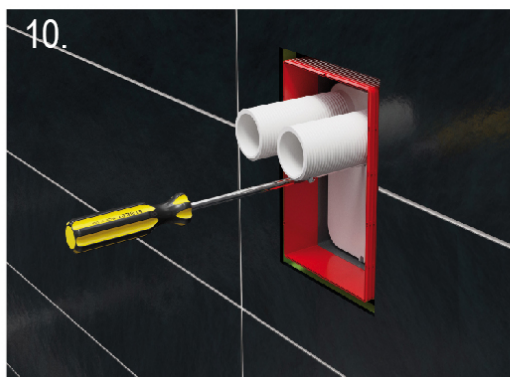


HL4000.1 (Pic. 4 - 9)

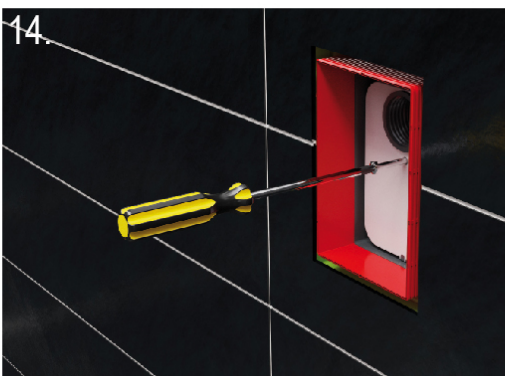


INSTALLATION

HL4000.2 (Pic. 10 - 12)



HL4000.3 (Pic. 13 - 18)



HL4000.3 (Pic. 13 - 18)



+ HL134.1K o. HL134.1C

CAPACITY	HL4000.1 and HL4000.2 – 2x 0,5 l/s, HL4000.3 – 0,6 l/s
INSTALLATION DEPTH	70 - 115 mm
COVER	120 x 166 mm
PRICES	See price list
DELIVERY FROM:	1st of February 2016